



SunSauna

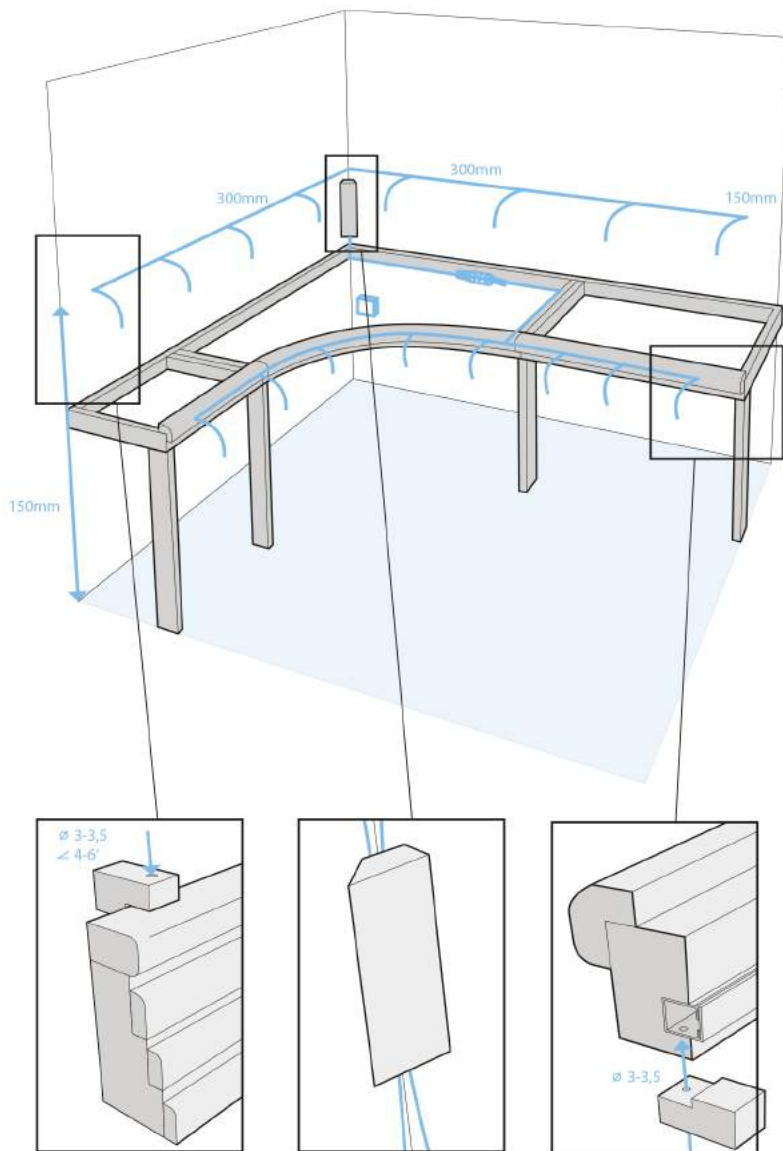
Kotikylpylä

LED light installation instructions - ECOled

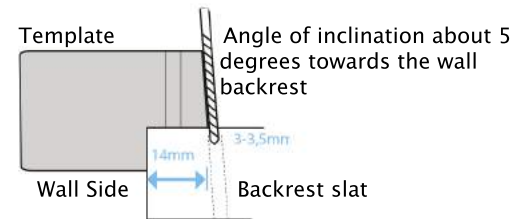
Sun Sauna Oy
Kuormaajantie 40
40320 Jyväskylä
puh. 040 3470220
info@sunsauna.fi

Attention! Fibres must not be bent when cold
(if they have been stored or transported in freezing temperatures,
they must first be left to warm up at room temperature)

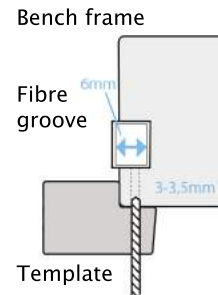
SURFACE-MOUNTED FIBRE-OPTIC LIGHT INSTALLATION



Drilling holes (backrest)



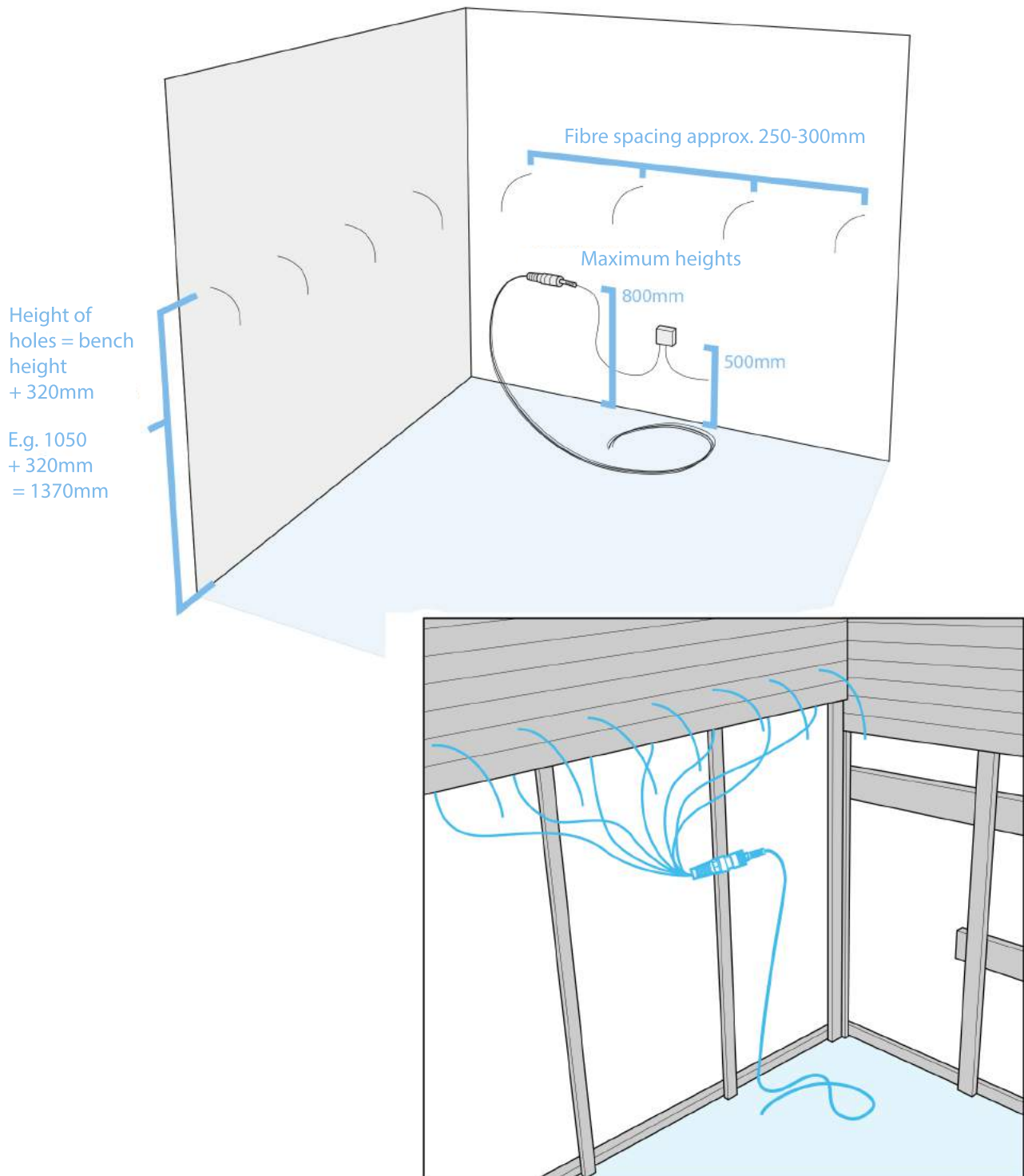
Drilling holes (bench)



Note: The minimum bending radius of the fibre is 15mm. The fibre holes should be drilled before installation!

1. Measure and mark the positions of the fibres. Install the projector in the correct position see the instructions for installing the projector (p.5).
2. Divide the fibres between the backrest and the front section. **Make sure that the fibres are long enough.** The recommended fibre spacing is about 250-300mm. Bring the fibres for the backrest up to the corner of the bench, make a corner piece from your own panel, as in the second picture above.
3. Drill holes for the fibres in the front frame timber and backrest with a 3-3,5mm bit (use the supplied drill template to help if necessary). **The fibre holes should be drilled before installing the bench and backrest.**
4. Drill a large horizontal hole in the uppermost support batten of the backrest and thread the fibres through it.
5. Thread the fibres through the fibre groove and behind the backrest. Pull the fibres firmly through the fibre hole and cut off the excess fibre with a sharp carpet knife or shears. **It is easier to insert the fibre through the hole if you fold it well first.**
6. If the fibre fits loosely in the hole, stabilise it with a wooden wedge, silicone or glue

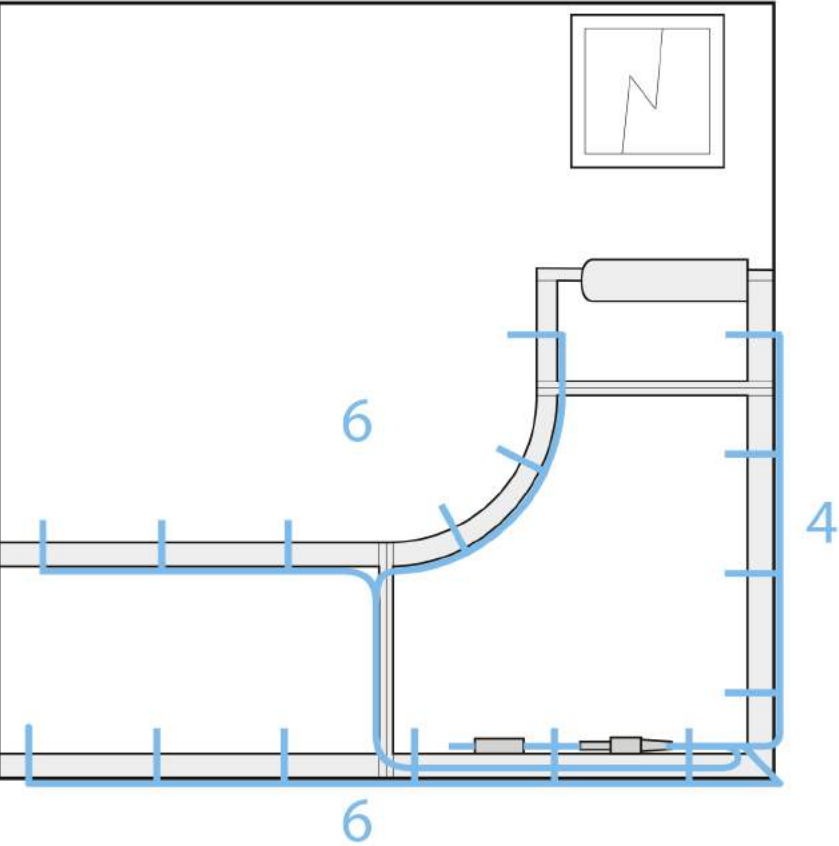
INSTALLATION OF FIBRES UNDER A PANEL



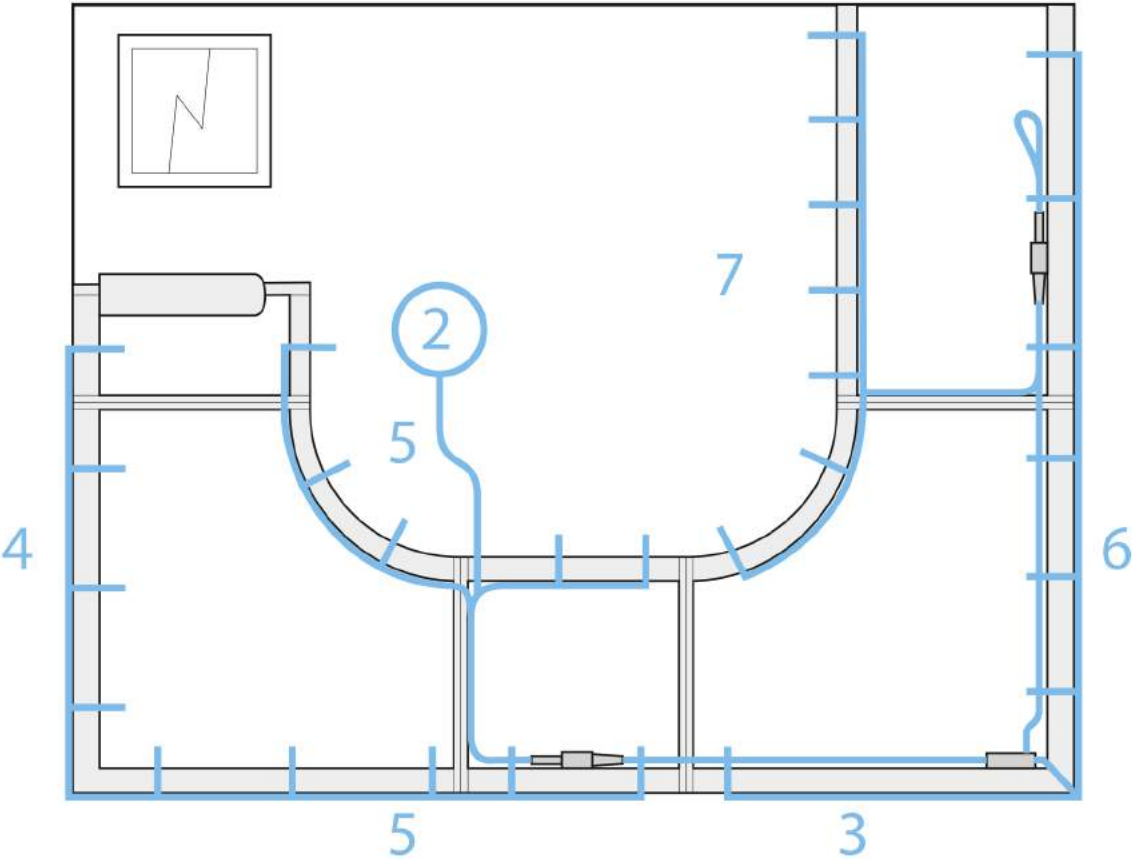
1. Distribute and tape the fibres for the backrest in the right places on aluminium paper before panelling. Use the shortest possible lengths of fibre, such that the fibres will definitely reach the front edge of the bench. The fibres must not be pinched between the ventilation trim and the panel, so drill holes in the ventilation trim to move the fibres to the desired position, if necessary.
2. Install the projector in the correct position once panelling has been completed see the instructions for installing the projector (p.5).
3. Installation of the fibres is the same as for surface installation, except that the fibres do not have to be threaded horizontally behind the backrest.

EXAMPLES OF FIBRE INSTALLATION

Installation of lighting fibre in a 1-cornered bench (16 fibres)



Installation of lighting fibre in a 2-cornered ceiling (32 fibres)



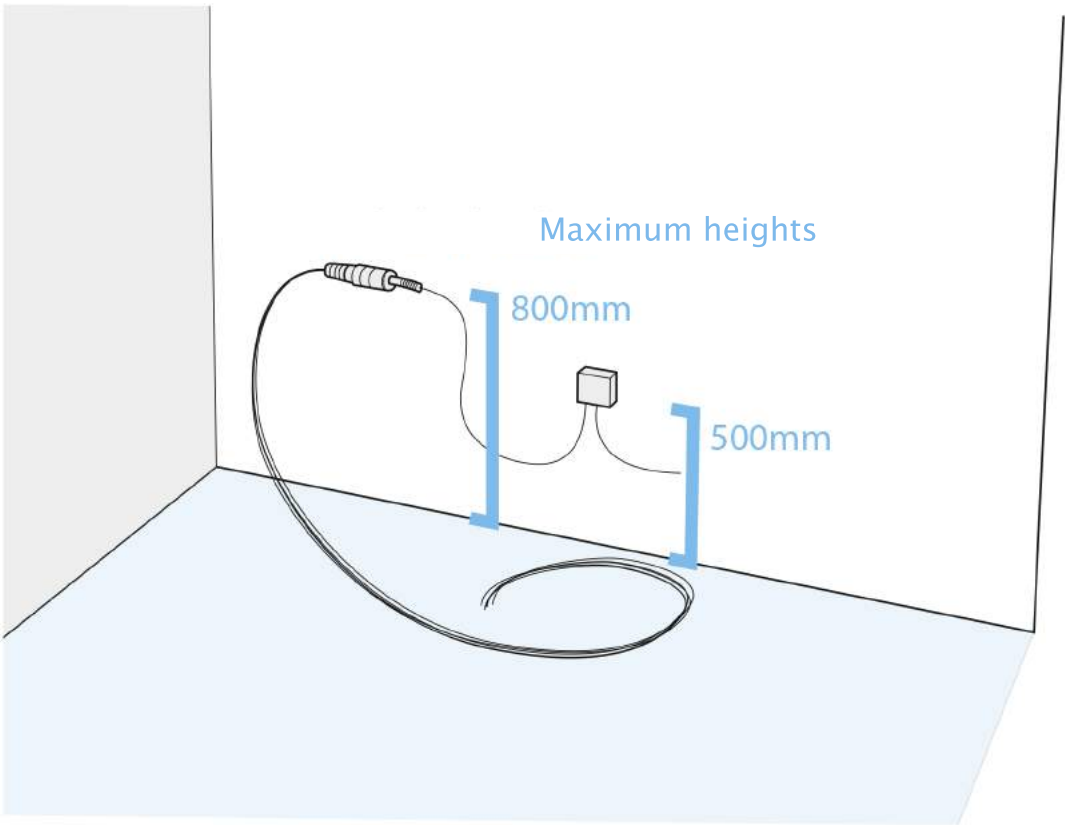
INSTALLATION OF THE PROJECTOR

- Projector mounting height max. 800 mm from the floor. Transformer box max. 500 mm.
- The projector is approved for installation in saunas (IP66).
- The projector is mounted on the wall below the ceiling, horizontally (page 7), from where the fibres are routed to the backrest and the front edge of the bench (or just one or the other).

Installation:

1. Fix the transformer housing to the wall, insert the supply cable in through the housing, connect the supply cable to the input terminals of the transformer and fix the cover of the protective housing.
2. Attach the projector bracket to the wall with the supplied screw and press the projector into the bracket
- 3.. Connect the cable from the projector to the connector on the side of the transformer box

Attention! The length of the projector connection cable is 2 metres.

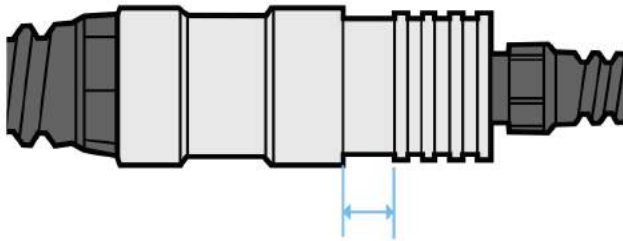


Lengths and quantities of fibres in different projectors
(other sizes are combinations of these)

	1,40m	1,70m	2,00m	2,30m	2,60m	2,90m	3,20m
10 fibre illumination	2	4	2	2			
16 fibre illumination	4	4	4	2	2		
22-fibre illumination	4	4	4	4	2	2	2
+1 stove fibre, length 5m							

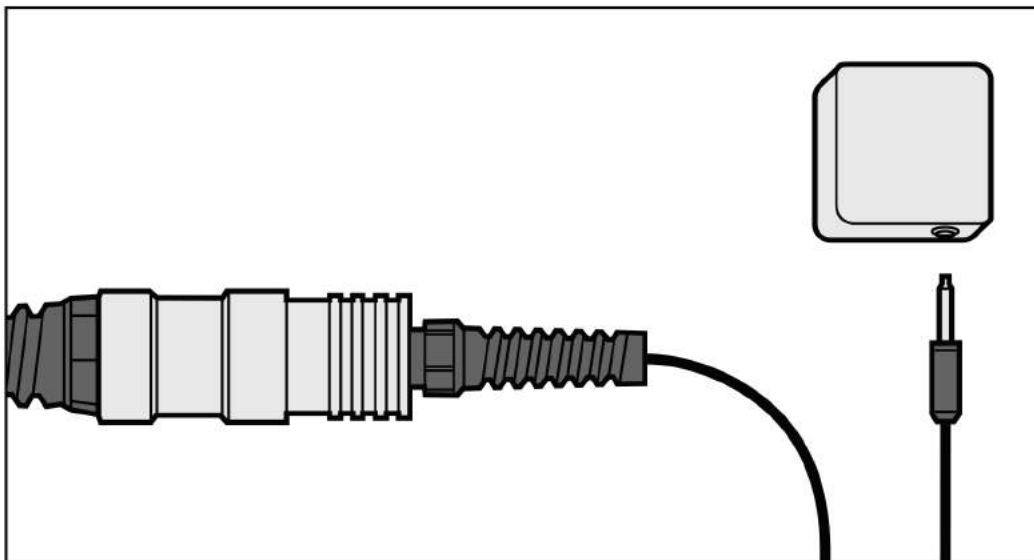
Light dimmer control

The ECOled's luminous intensity cannot be adjusted using an electronic dimmer, the projector has a mechanically adjustable dimmer. Dimming is done by pulling the end of the supply cable out of the projector body.



Replacing the projector bulb

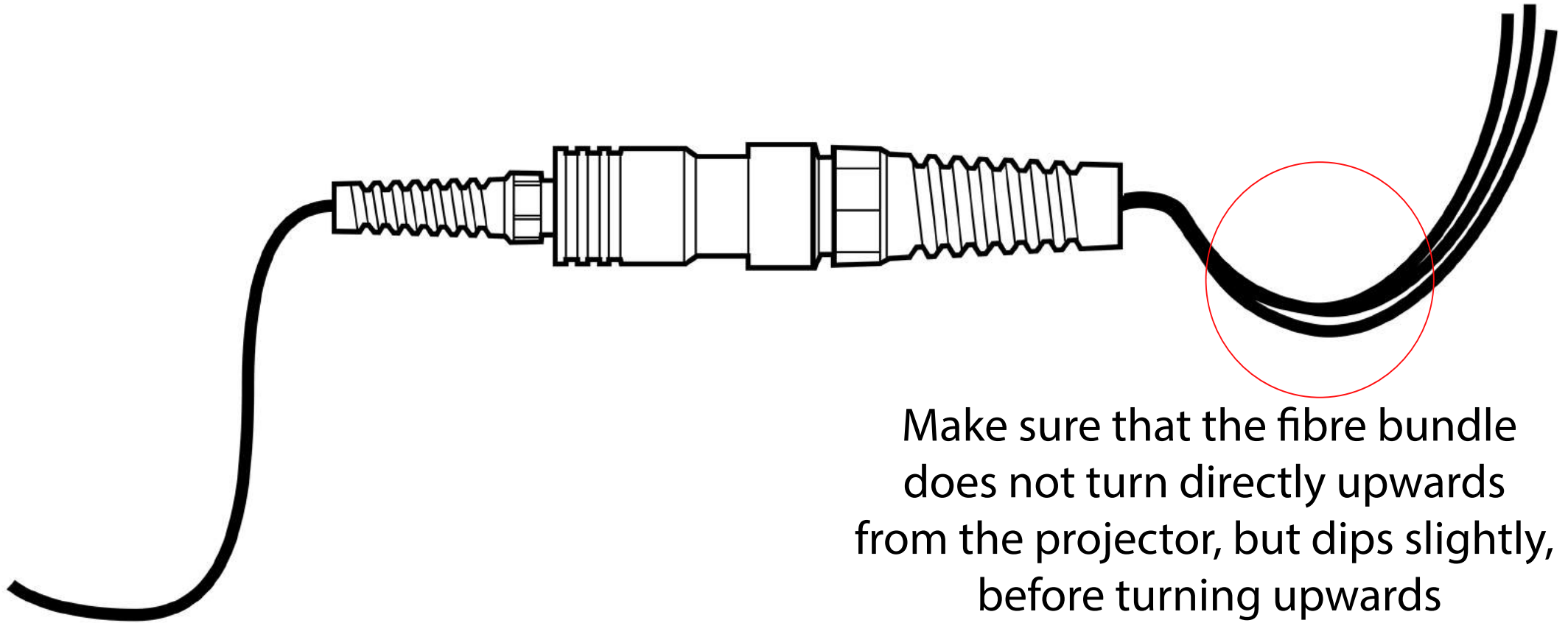
The projector is equipped with a fixed LED light source. It can be replaced by disconnecting the end of the LED head from the projector (by pulling it out) and the other end from the connector on the transformer box and replacing it with a new one.



Warranty

SunSauna Oy's warranty for the fibre illumination projector is 12 months. Warranty starts from the date of invoice. Damage caused by the customer during installation is not covered by the warranty.

Fibre projector installation on a wall



Make sure that the fibre bundle does not turn directly upwards from the projector, but dips slightly, before turning upwards

Attention! Install the projector horizontally, otherwise the warranty will not be valid.